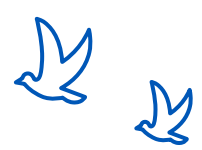
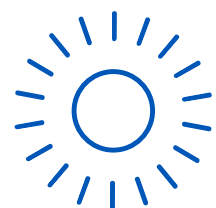


The global marine environment

We rely on the sea for a multitude of reasons including its extremely high biodiversity, its role in climate regulation as well as economically, culturally and socially.



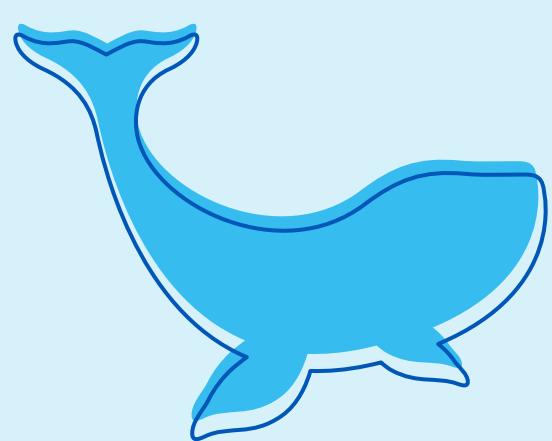
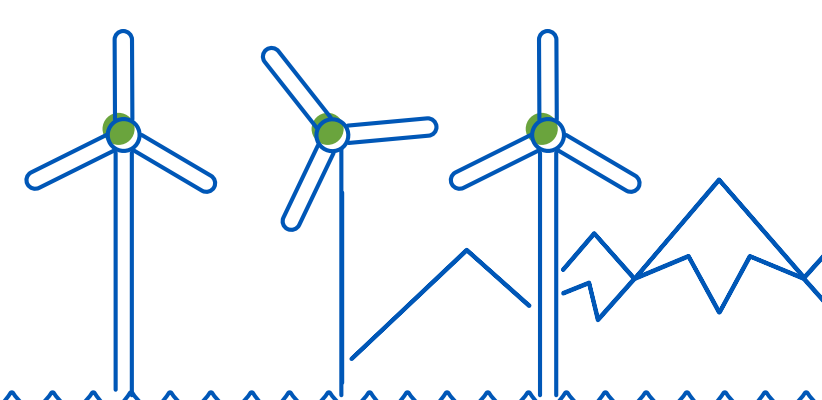
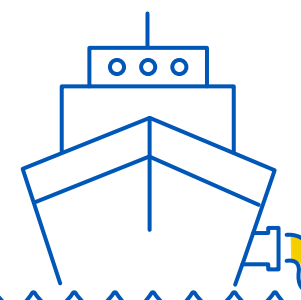
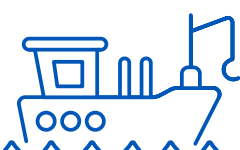
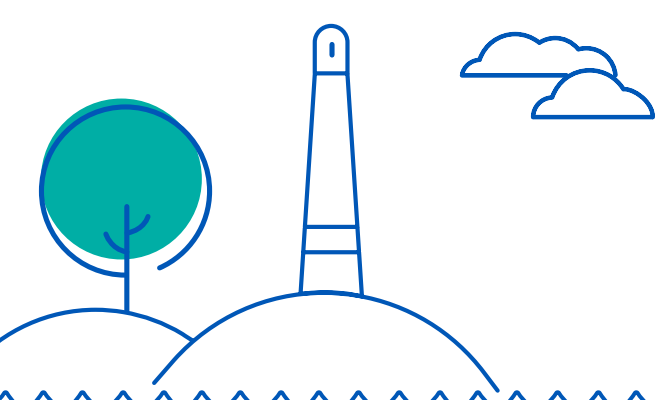
The UK & Ireland make up **26,154km (1.6%)** of the total global coastline.¹



In Ireland the **Department of Housing, Local Government and Heritage** intends to begin developing legislation on the identification, designation and management of MPAs.²

The **Ballast Water Management Convention** regulates the discharge of ballast water and sediments by ships globally. Ballast waters and biofouling are considered two of the main pathways by which marine non-native species are introduced to new environments.³

Renewable energy sources are projected to account for more than half of global electricity production by 2035. In 2019, **around 11% of global primary energy** came from renewable technologies **including wind, tidal, wave and hydropower**.⁴



Around **226,000 marine species** have been identified and described so far. However, researchers estimate that the ocean may be home to **700,000 marine species**.⁵

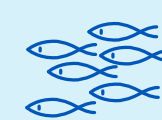
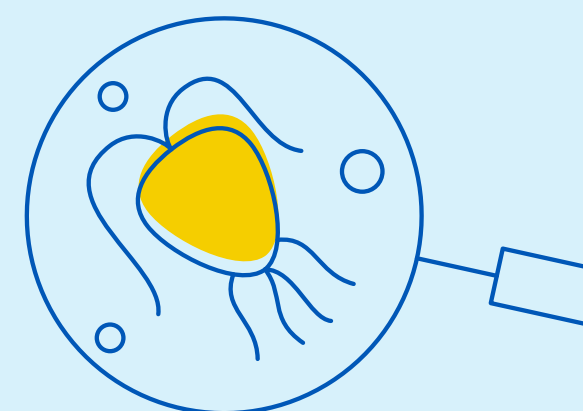
The United Nations Food and Agriculture Organization estimates that **31.4% of fish stocks are either fished to capacity or overfished**.⁶



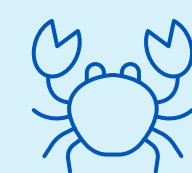
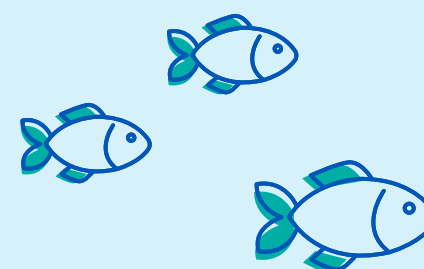
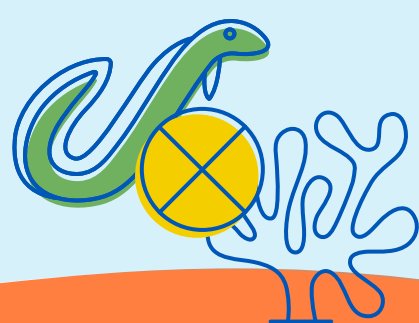
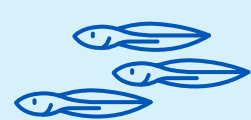
Did you know that the Cuvier's beaked whale is the deepest diving marine mammal in the world? It can spend a whopping **3 hours and 42 minutes** diving underwater to depths of **nearly 3000m**.⁷

There are currently **371 Marine Protected Areas (MPAs)** covering approximately **38% of UK seas**.⁸

The **UK Marine Strategy** is the UK's overarching plan to ensure that our seas recover to a healthy state, known as **"Good Environmental Status" (GES) by 2020**. Currently GES has only been achieved for four of the descriptors of GES.⁹



The **International Maritime Organization** has identified INNS as **one of the four greatest threats to the world's oceans**.¹⁰



How APEM are supporting

APEM are a global environmental consultancy providing independent advice and guidance to support government and environmental regulatory guidelines.

Our integrated expert approach covers all areas of the natural environment, enhanced with innovative remote sensing technology and world-class laboratory services to provide advice reinforced by data excellence.

We support clients with an extensive range of services, including:

- Marine ecology, fisheries, ornithology, marine mammal surveys and consultancy
- All types of marine ecological assessments
- Water quality survey & analysis
- Marine licence applications
- Biosecurity risk assessments & management of invasive non-native species (INNS)
- Natural capital & ecosystem approaches
- Marine invertebrate analysis (we run the NMBAQC scheme - QA across Europe)
- Ballast water analysis and biofouling assessments

Find out how APEM support marine environmental and ecological needs [here](#).

1. <https://www.wri.org>
 2. <https://www.gov.ie/en/publication/e00ec-marine-protected-areas/>
 3. <https://www.imo.org/en/OurWork/Environment/Pages/BWMConventionandGuidelines.aspx>
 4. <https://ourworldindata.org/renewable-energy#how-much-of-our-primary-energy-comes-from-renewables>
 5. <https://en.unesco.org/news/ocean-life-marine-age-discovery-0#:~:text=About%20226%2C000%20marine%20species%20have%20been%20identified%20and%20described%20so%20far.>
 6. <https://www.nationalgeographic.com/environment/article/ocean-threats>
 7. <https://journals.biologists.com/jeb/article/223/18/jeb222109/225819/Extreme-diving-in-mammals-first-estimates-of>
 8. <https://www.mcsuk.org/ocean-emergency/marine-protected-areas/>
 9. <https://moat.cefas.co.uk/summary-of-progress-towards-good-environmental-status/>
 10. <https://www.imo.org/>